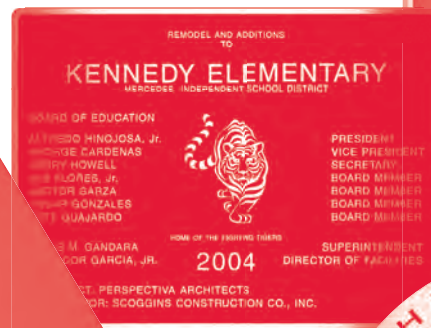


**Price Book**  
**Effective January 1, 2015**  
*Prices Subject to Change Without Notice*

# **A.R.K. RAMOS**

## **SIGNAGE SYSTEMS**

**CAST PLAQUES**  
**CAST LETTERS**  
**CHANNEL LETTERS**  
**CUT LETTERS**  
**STAINLESS STEEL**  
**LETTERS-PLAQUES**  
**ADA SIGNAGE**  
**...and More**



Visit us on the web: @ **ARKRAMOS.COM**

# Plaque Pricing

## Standard Plaque Pricing

The plaque at right would be considered a standard plaque and can be priced from the information on this page. Its border, letter style, finish and mounting method are all selected from standard catalog specifications. It has no more than one letter per square inch and does not have any special ornamentation. Plaque layouts with special work must be sent to our estimating department for pricing.



Standard Cast Plaques	Bronze**	Aluminum***
30 sq inches or less*	\$145.00*	\$108.00*
31 to 50 sq inches*	\$186.00*	\$145.00*
51 to 99 sq inches	\$3.72 per sq in	\$3.02 per sq in
100 to 160 sq inches	\$3.52 per sq in	\$2.42 per sq in
161 to 1440 sq inches	\$3.00 per sq in	\$1.90 per sq in
1441 to 1728 sq inches	\$3.20 per sq in	\$2.02 per sq in

## Thin Option Cast Plaques (3/8" total depth)

160 to 720 sq inches	\$2.76 per sq in	\$1.75 per sq in
----------------------	------------------	------------------

\*Add \$20.00 (net) for approval prints if needed.

\*\*Add 50% to bronze pricing for cast brass.

\*\*\*Add 10% to aluminum pricing above for Echo Bronze, Echo Copper, or Echo Brass.

## Plaques with Uneven Dimensions

Plaque dimensions with fractional sizes will be figured to the next inch. For example: a 12 3/4" x 13" will be figured as a 13" x 13". Contact the factory if you have questions regarding sizes and costs.

## Excess Letters

The prices above allows for one letter per square inch. Letters in excess of this allotment will be charged for by the letter at a cost of 25 cents each (net).

## Ornate Borders

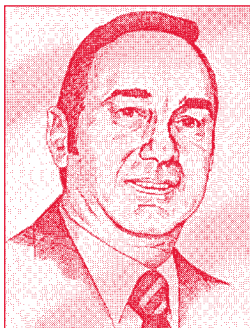
Egg and Dart, Laurel Leaf, Ogee or Lamb's Tongue borders are \$1.50 per linear inch figured on the perimeter measurement of the plaque (net).

## Flat Relief Etched

Photo-etched and low relief portrait panels can be attached to cast plaques or used separately. Either portraits or artistic renderings can be created using this method. Available in aluminum, brass, bronze, or stainless steel.

## Etched Portraits

5" x 7" \$504.00  
8" x 10" \$695.00



## Sculpted (Bas) Relief Portraits and Pictorials

Sculpted relief from your photograph and then cast in bronze, brass or aluminum. Some pricing is given below. Pricing is for single individual photo reproduction. Contact factory for additional information on sizes not listed.

### First Portrait

6" - 9" \$1,269.00  
10" - 12" \$1,374.00  
14" \$1,449.00  
16" \$1,500.00  
18" \$1,544.00  
20" \$1,796.00

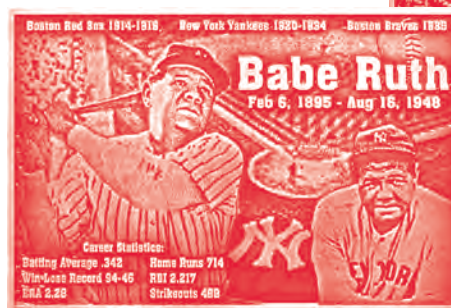
### Additional Identical Portraits

6" - 9" \$187.00 net    10" - 12" \$226.00 net  
14" \$281.00 net    16" \$321.00 net  
18" \$360.00 net    20" \$397.00 net



## Perfect Impression™ Plaque Pricing

Perfect Impression™ plaques allow you to create pictorials in cast metals at an economical cost. Contact our sales department today for more information. Pricing below.



## Perfect Impression™ Plaques

	Bronze	Aluminum
81 - 160 sq inches	\$6.70 per sq in	\$5.00 per sq in
161 - 1440 sq inches	\$5.00 per sq in	\$4.00 per sq in
Portraits up to 8" x 10"	\$575.00	\$535.00

Additional photos will be \$250.00 each

Minimum order \$300.00 net

## Special Pattern Work

Special letters, engraving, and/or ornamentation such as sculpted figures, seals or ornate borders must be figured at an additional cost. See additional pricing on this page or contact the factory with questions.

## Approval Prints

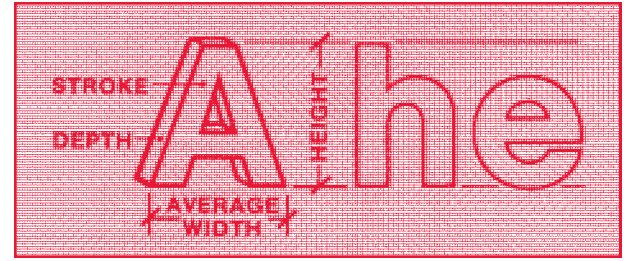
Computer generated shop drawings are included in the pricing above on plaques over 50 square inches. If returned for resubmittal an additional charge will be applied. (\$20 minimum)

## Full Size Drawings

Full size drawings can be sent in lieu of scaled drawings. The minimum charge for this service or for resubmittal in full size is \$40 (net). Contact the factory for additional costs.

# Standard Cast Letters

The following prices are for individual letters only and include standard mounting studs. **Templates, adhesive and special hardware are optional and are priced separately on page 15.** Note that lower case letters are sized and priced based on the height of the ascender letters (b, d f, etc.) which are the same height as the capital. Four shop drawing prints can be provided for approval upon request. Contact our sales staff for any pricing not specified herein.



## Futura No. 501

A B C D E F G H I J K L M N O P Q R S T U V W X Y Z I 2 3 4 5 6 7 8 9 0 &

DIMENSIONS			
HEIGHT	AVERAGE WIDTH	STROKE	DEPTH
2	1-5/8	5/16	3/8
3	2-7/16	1/2	3/8
4	3-1/4	3/4	3/8
6	5	1-1/4	1
8	6-1/2	1-11/16	1-1/4
10	8-1/4	2	1-1/2
12	9-3/4	2-1/2	2
14	11-1/2	2-1/2	2
16	13	3-3/8	2-1/4
18	14-3/4	3-1/2	2
20	16-1/2	3-1/2	2
22	18-1/2	4	2
24	19-1/2	4	2

ALUMINUM FINISHES				
F-1 Satin Face, Matte Edge, Clear Lacquer	F-1B Buffed Face, Matte Edge, Clear Lacquer	F-4 Satin Face, Matte Edge, Clear Anodized	F-3 Painted Finish F-4A Satin Face, Filed Edge, Clear Anodized	F-6 Bronze or Black Duranodic; Gold Anodized
12.10	24.65	12.95	14.45	19.55
16.40	35.05	16.95	19.30	27.15
23.55	48.30	24.30	27.60	36.95
35.15	72.35	36.25	40.45	56.55
43.50	93.15	45.95	49.75	70.25
56.15	118.00	58.30	64.30	90.05
70.00	144.35	73.25	84.65	104.05
101.55	195.85	105.15	118.65	142.70
127.05	250.70	132.25	147.25	190.05
152.60	305.55	159.35	176.80	237.40
163.50	337.50	176.65	193.20	259.20
174.40	370.10	193.95	209.65	281.05
197.30	410.95	211.40	226.70	308.55

BRONZE FINISHES		
F-7 Satin Face, Oxidized Edge, Clear Lacquer	F-7B Buffed Face, Oxidized Edge, Clear Lacquer	F-10 (US-10B) Antique, Oil Rubbed Satin Face, Matte Edge, Clear Lacquer
25.20	37.90	26.45
33.95	52.80	35.40
48.00	73.30	50.30
74.40	112.15	77.85
101.30	151.70	105.90
131.95	194.80	137.65
197.85	273.45	207.55
272.30	359.80	285.05
338.70	459.15	355.15
405.10	518.50	425.20
442.85	572.22	464.95
480.60	625.95	504.70
519.85	678.30	545.60

Add 50% to bronze pricing, for cast brass.

## Kabel No. 502

A B C D E F G H I J K L M N O P Q R S T U V W X Y Z I 2 3 4 5 6 7 8 9 0 &

DIMENSIONS			
HEIGHT	AVERAGE WIDTH	STROKE	DEPTH
2	1-3/4	1/4	3/8
3	2	1/2	3/8
4	2-3/4	5/8	3/8
6	4	7/8	1/2
8	5-1/2	1-1/4	5/8
10	7	1-1/2	1
12	8	1-3/4	1
14	9-1/2	2	1
16	10	2-1/8	1
18	12	2-1/4	1

ALUMINUM FINISHES				
F-1 Satin Face, Matte Edge, Clear Lacquer	F-1B Buffed Face, Matte Edge, Clear Lacquer	F-4 Satin Face, Matte Edge, Clear Anodized	F-3 Painted Finish F-4A Satin Face, Filed Edge, Clear Anodized	F-6 Bronze or Black Duranodic; Gold Anodized
17.05	29.55	19.00	20.45	28.70
18.15	36.60	20.05	21.70	30.80
19.35	44.25	20.85	23.40	32.75
26.40	63.65	28.65	31.95	45.00
36.05	85.60	39.35	44.25	61.20
50.25	112.35	54.00	60.35	85.80
57.35	131.75	61.75	69.00	98.05
73.30	167.45	81.25	90.85	128.25
98.80	206.40	105.35	116.80	166.40
125.35	278.25	133.15	145.65	212.00

BRONZE FINISHES		
F-7 Satin Face, Oxidized Edge, Clear Lacquer	F-7B Buffed Face, Oxidized Edge, Clear Lacquer	F-10 (US-10B) Antique, Oil Rubbed Satin Face, Matte Edge, Clear Lacquer
40.05	52.60	41.70
42.20	61.25	44.05
44.55	69.85	46.75
61.50	99.20	63.90
83.90	134.30	87.60
111.30	174.30	116.95
160.95	236.60	168.95
207.65	296.00	217.90
267.35	368.25	280.80
333.60	447.05	350.25

Add 50% to bronze pricing, for cast brass.

**Classic No. 504 (upper & lower case available)**

**A B C D E F G H I J K L M N O P Q R S T U V W X Y Z 1 2 3 4 5 6 7 8 9 0 &  
a b c d e f g h i j k l m n o p q r s t u v w x y z**

DIMENSIONS				
HEIGHT	AVERAGE WIDTH	STROKE		DEPTH
2	1-3/4	5/16	1/8	3/8
3	2-3/4	1/2	3/16	3/8
4	3-1/2	5/8	1/4	3/8
6	5	1	3/8	1/2
8	7	1-1/4	1/2	3/4
10	8-1/4	1-1/2	1/2	3/4
12	10	1-3/4	5/8	1
14	11	2-1/4	1	1
16	14	2-1/4	1	1
18	15	2-5/8	1-1/4	1-1/2

ALUMINUM FINISHES				
F-1 Satin Face, Matte Edge, Clear Lacquer	F-1B Buffed Face, Matte Edge, Clear Lacquer	F-4 Satin Face, Matte Edge, Clear Anodized	F-3 Painted Finish F-4A Satin Face, Filed Edge, Clear Anodized	F-6 Bronze or Black Duranodic; Gold Anodized
F-2 Satin Face, Painted Edge	F-2B Buffed Face, Painted Edge			
10.85	23.50	11.50	13.80	19.20
16.40	35.20	17.85	20.25	28.30
20.25	45.15	22.25	27.40	35.20
27.40	65.20	28.60	34.05	48.15
36.50	86.60	38.05	45.05	65.00
48.15	110.85	51.95	60.25	84.35
60.80	136.00	65.35	72.70	101.95
70.85	166.05	75.85	82.00	122.65
91.55	200.10	94.65	105.50	143.30
119.20	273.75	123.10	132.65	186.60

BRONZE FINISHES		
F-7 Satin Face, Oxidized Edge, Clear Lacquer	F-7B Buffed Face, Oxidized Edge, Clear Lacquer	F-10 (US-10B) Antique, Oil Rubbed Satin Face, Matte Edge, Clear Lacquer
F-8 Oxidized Face, & Edge Clear Lacquer		
28.75	41.50	30.05
42.00	60.90	43.75
55.45	81.00	58.05
71.40	109.55	74.65
94.60	145.70	98.95
125.90	189.50	131.55
169.80	276.70	178.20
187.60	276.70	196.80
233.45	335.25	245.05
303.70	418.15	318.75

Add 50% to bronze pricing, for cast brass.

**Broadway No. 505**

**A B C D E F G H I J K L M N O P Q R S T U V W X Y Z 1 2 3 4 5 6 7 8 9 0 &**

DIMENSIONS				
HEIGHT	AVERAGE WIDTH	STROKE		DEPTH
2	2	5/8	3/16	3/8
4	3-1/2	1-1/4	3/8	3/8
6	5-1/2	2	1/2	5/8
8	6-1/2	2-1/2	5/8	1
10	8-1/2	3	3/4	1
12	11	4	1	1
14	11-1/2	4-1/4	1-1/8	1
16	15	4-1/4	1-1/2	1
18	16	5	1-1/2	1
20	18	6	2	1-1/2

ALUMINUM FINISHES				
F-1 Satin Face, Matte Edge, Clear Lacquer	F-1B Buffed Face, Matte Edge, Clear Lacquer	F-4 Satin Face, Matte Edge, Clear Anodized	F-3 Painted Finish F-4A Satin Face, Filed Edge, Clear Anodized	F-6 Bronze or Black Duranodic; Gold Anodized
F-2 Satin Face, Painted Edge	F-2B Buffed Face, Painted Edge			
17.05	29.55	19.00	20.45	28.70
19.35	44.25	20.85	23.40	32.75
26.40	63.65	28.65	31.95	45.00
36.05	85.60	39.35	44.25	61.20
50.25	112.35	54.00	60.35	85.80
57.35	131.75	61.75	69.00	98.05
73.30	167.45	81.25	90.85	128.25
98.80	206.40	105.35	116.80	166.40
125.35	278.25	133.15	145.65	212.00
137.90	306.10	146.50	160.25	233.20

BRONZE FINISHES		
F-7 Satin Face, Oxidized Edge, Clear Lacquer	F-7B Buffed Face, Oxidized Edge, Clear Lacquer	F-10 (US-10B) Antique, Oil Rubbed Satin Face, Matte Edge, Clear Lacquer
F-8 Oxidized Face, & Edge Clear Lacquer		
40.05	52.60	41.70
44.55	69.85	46.75
61.50	99.20	63.90
83.90	134.30	87.60
111.30	174.30	116.95
160.95	236.60	168.95
207.65	296.00	217.90
267.35	368.25	280.80
333.60	447.05	350.25
367.00	491.80	385.30

Add 50% to bronze pricing, for cast brass.

**Thin Ribbon No. 506**

**A B C D E F G H I J K L M N O P Q R S T U V W X Y Z 1 2 3 4 5 6 7 8 9 0 &**

DIMENSIONS			
HEIGHT	AVERAGE WIDTH	STROKE	DEPTH
2	1-1/2	1/8	3/4
3	2	3/16	3/4
4	3-1/8	3/16	3/4
6	4-1/2	5/16	1
8	5/14	3/8	1
10	7-1/4	1/2	1-1/2
12	8-1/2	5/8	1-1/2
14	10	3/4	2

ALUMINUM FINISHES				
F-1 Satin Face, Matte Edge, Clear Lacquer	F-1B Buffed Face, Matte Edge, Clear Lacquer	F-4 Satin Face, Matte Edge, Clear Anodized	F-3 Painted Finish F-4A Satin Face, Filed Edge, Clear Anodized	F-6 Bronze or Black Duranodic; Gold Anodized
F-2 Satin Face, Painted Edge	F-2B Buffed Face, Painted Edge			
12.10	24.65	12.95	14.45	19.55
16.40	35.05	16.95	19.30	27.15
23.55	48.30	24.30	27.60	36.95
35.15	72.35	36.25	40.45	56.55
43.50	93.15	45.95	49.75	70.25
56.15	118.00	58.30	64.30	90.05
70.00	144.35	73.25	84.65	104.05
101.55	195.85	105.15	118.65	142.70

BRONZE FINISHES		
F-7 Satin Face, Oxidized Edge, Clear Lacquer	F-7B Buffed Face, Oxidized Edge, Clear Lacquer	F-10 (US-10B) Antique, Oil Rubbed Satin Face, Matte Edge, Clear Lacquer
F-8 Oxidized Face, & Edge Clear Lacquer		
25.20	37.90	26.45
33.95	52.80	35.40
48.00	73.30	50.30
74.40	112.15	77.85
101.30	151.70	105.90
131.95	194.80	137.65
197.85	273.45	207.55
272.30	359.80	285.05

Add 50% to bronze pricing, for cast brass.

## Heavy Ribbon No. 507

A B C D E F G H I J K L M N O P Q R S T U V W X Y Z I 2 3 4 5 6 7 8 9 0 &

DIMENSIONS			
HEIGHT	AVERAGE WIDTH	STROKE	DEPTH
2	1-1/2	3/16	3/4
3	2	5/16	3/4
4	3-1/8	1/4	1
6	4-1/2	3/8	1-1/2
8	5-1/4	1/2	1-1/2
10	7-1/4	5/8	2
12	8-1/2	3/4	2
14	10	7/8	2
18	13	7/8	3

ALUMINUM FINISHES				
F-1 Satin Face, Matte Edge, Clear Lacquer	F-1B Buffed Face, Matte Edge, Clear Lacquer	F-4 Satin Face, Matte Edge, Clear Anodized	F-3 Painted Finish  F-4A Satin Face, Filed Edge, Clear Anodized	F-6 Bronze or Black Duranodic; Gold Anodized
12.10	24.65	12.95	14.45	19.55
16.40	35.05	16.95	19.30	27.15
23.55	48.30	24.30	27.60	36.95
35.15	72.35	36.25	40.45	56.55
43.50	93.15	45.95	49.75	70.25
56.15	118.00	58.30	64.30	90.05
70.00	144.35	73.25	84.65	104.05
127.05	250.70	132.25	147.25	190.05
152.60	305.55	159.35	176.80	237.40

BRONZE FINISHES		
F-7 Satin Face, Oxidized Edge, Clear Lacquer	F-7B Buffed Face, Oxidized Edge, Clear Lacquer	F-10 (US-10B) Antique, Oil Rubbed Satin Face, Matte Edge, Clear Lacquer
25.20	37.90	26.45
33.95	52.80	35.40
48.00	73.30	50.30
74.40	112.15	77.85
101.30	151.70	105.90
131.95	194.80	137.65
197.85	273.45	207.55
272.30	359.80	285.05
405.10	518.50	425.20

Add 50% to bronze pricing, for cast brass.

## Marshall No. 510

A B C D E F G H I J K L M N O P Q R S T U V W X Y Z I 2 3 4 5 6 7 8 9 0 &

DIMENSIONS			
HEIGHT	AVERAGE WIDTH	STROKE	DEPTH
3	2-1/2	3/8	3/8
4	2-3/4	7/16	3/8
6	4	11/16	5/8
8	5-1/2	7/8	3/4
9	6	1	1
10	7	1-1/4	1
12	9	1-3/8	1-1/8
15	10	1-3/4	1-3/8
18	12	2	1-1/2
20	14	2-1/2	1-5/8

ALUMINUM FINISHES				
F-1 Satin Face, Matte Edge, Clear Lacquer	F-1B Buffed Face, Matte Edge, Clear Lacquer	F-4 Satin Face, Matte Edge, Clear Anodized	F-3 Painted Finish  F-4A Satin Face, Filed Edge, Clear Anodized	F-6 Bronze or Black Duranodic; Gold Anodized
18.15	36.60	20.05	21.70	30.80
19.35	44.25	20.85	23.40	32.75
26.40	63.65	28.65	31.95	45.00
36.05	85.60	39.35	44.25	61.20
43.20	99.10	46.85	52.20	73.05
50.25	112.35	54.00	60.35	85.80
57.35	131.75	61.75	69.00	98.05
85.60	186.75	93.60	103.60	147.20
125.35	278.25	133.15	145.65	212.00
137.90	306.10	146.50	160.25	233.20

BRONZE FINISHES		
F-7 Satin Face, Oxidized Edge, Clear Lacquer	F-7B Buffed Face, Oxidized Edge, Clear Lacquer	F-10 (US-10B) Antique, Oil Rubbed Satin Face, Matte Edge, Clear Lacquer
42.20	61.25	44.05
44.55	69.85	46.75
61.50	99.20	63.90
83.90	134.30	87.60
97.50	154.10	101.95
111.30	174.30	116.95
160.95	236.60	168.95
237.45	332.50	249.30
333.60	447.05	350.25
367.00	491.80	385.30

Add 50% to bronze pricing, for cast brass.

## Huxley Modern No. 511

A B C D E F G H I J K L M N O P Q R S T U V W X Y Z I 2 3 4 5 6 7 8 9 0 &

DIMENSIONS			
HEIGHT	AVERAGE WIDTH	STROKE	DEPTH
3	1-1/4	1/4	3/4
4	1-3/8	1/4	3/4
6	2	3/8	1-1/8
8	2-5/8	1/2	1-1/2
10	3-3/8	5/8	2
12	4	3/4	2-1/4
14	4-5/8	7/8	2-5/8
16	5-3/8	1	3

ALUMINUM FINISHES				
F-1 Satin Face, Matte Edge, Clear Lacquer	F-1B Buffed Face, Matte Edge, Clear Lacquer	F-4 Satin Face, Matte Edge, Clear Anodized	F-3 Painted Finish  F-4A Satin Face, Filed Edge, Clear Anodized	F-6 Bronze or Black Duranodic; Gold Anodized
16.40	35.05	16.95	19.30	27.15
23.55	48.30	24.30	27.60	36.95
35.15	72.35	36.25	40.45	56.55
43.50	93.15	45.95	49.75	70.25
56.15	118.00	58.30	64.30	90.05
70.00	144.35	73.25	84.65	104.05
101.55	195.85	105.15	118.65	142.70
127.05	250.70	132.25	147.25	190.05

BRONZE FINISHES		
F-7 Satin Face, Oxidized Edge, Clear Lacquer	F-7B Buffed Face, Oxidized Edge, Clear Lacquer	F-10 (US-10B) Antique, Oil Rubbed Satin Face, Matte Edge, Clear Lacquer
33.95	52.80	35.40
48.00	73.30	50.30
74.40	112.15	77.85
101.30	151.70	105.90
131.95	194.80	137.65
197.85	273.45	207.55
272.30	359.80	285.05
338.70	459.15	355.15

Add 50% to bronze pricing, for cast brass.

## Condensed Ribbon No. 512

A B C D E F G H I J K L M N O P Q R S T U V W X Y Z 1 2 3 4 5 6 7 8 9 0 &

DIMENSIONS			
HEIGHT	AVERAGE WIDTH	STROKE	DEPTH
3	1-3/8	1/4	3/4
4	1-5/8	5/16	1
6	2-1/2	3/8	1-1/8
8	3-1/2	1/2	1-1/2
9	3-3/4	7/16	1-1/2
10	4-1/4	1/2	1-1/2
12	5	1/2	1-7/8
15	6-1/4	5/8	2-1/8

ALUMINUM FINISHES				
F-1 Satin Face, Matte Edge, Clear Lacquer	F-1B Buffed Face, Matte Edge, Clear Lacquer	F-4 Satin Face, Matte Edge, Clear Anodized	F-3 Painted Finish  F-4A Satin Face, Filed Edge, Clear Anodized	F-6 Bronze or Black Duranodic; Gold Anodized
F-2 Satin Face, Painted Edge	F-2B Buffed Face, Painted Edge			
16.40	35.05	16.95	19.30	27.15
23.55	48.30	24.30	27.60	36.95
35.15	72.35	36.25	40.45	56.55
43.50	93.15	45.95	49.75	70.25
49.85	105.60	52.15	57.05	80.15
56.15	118.00	58.30	64.30	90.05
70.00	144.35	73.25	84.65	104.05
114.30	223.30	118.70	132.95	166.40

BRONZE FINISHES		
F-7 Satin Face, Oxidized Edge, Clear Lacquer	F-7B Buffed Face, Oxidized Edge, Clear Lacquer	F-10 (US-10B) Antique, Oil Rubbed Satin Face, Matte Edge, Clear Lacquer
F-8 Oxidized Face, & Edge Clear Lacquer		
33.95	52.80	35.40
48.00	73.30	50.30
74.40	112.15	77.85
101.30	151.70	105.90
116.65	173.25	121.80
131.95	194.80	137.65
197.85	273.45	207.55
305.50	399.50	320.10

Add 50% to bronze pricing, for cast brass.

## Architectural Prismatic No. 514

A B C D E F G H I J K L M N O P Q R S T U V W X Y Z 1 2 3 4 5 6 7 8 9 0 &

DIMENSIONS			
HEIGHT	AVERAGE WIDTH	STROKE	DEPTH
3	3	1/2 1/4	3/8
4	4	5/8 3/8	5/8
6	5-1/2	7/8 1/2	5/8
8	7-1/2	1-1/8 5/8	3/4
10	9-1/2	1-3/8 11/16	3/4
12	11-1/2	1-1/2 3/4	7/8
14	13	2 7/8	7/8
16	15	2-1/4 1	1
18	17-1/8	2-5/8 1-1/4	1
20	18	2-7/8 1-1/2	1

ALUMINUM FINISHES				
F-1 Satin Face, Matte Edge, Clear Lacquer	F-1B Buffed Face, Matte Edge, Clear Lacquer	F-4 Satin Face, Matte Edge, Clear Anodized	F-3 Painted Finish  F-4A Satin Face, Filed Edge, Clear Anodized	F-6 Bronze or Black Duranodic; Gold Anodized
F-2 Satin Face, Painted Edge	F-2B Buffed Face, Painted Edge			
25.85	44.75		29.00	50.65
31.60	56.55		35.10	56.60
39.65	76.90		43.95	76.20
49.75	99.45		55.45	96.30
65.60	127.70		72.95	108.70
78.40	152.75		91.35	132.65
105.80	200.00		117.45	140.55
139.15	246.90		159.00	184.75
166.65	319.75		185.25	221.75
209.25	387.25		232.70	278.70

BRONZE FINISHES		
F-7 Satin Face, Oxidized Edge, Clear Lacquer	F-7B Buffed Face, Oxidized Edge, Clear Lacquer	F-10 (US-10B) Antique, Oil Rubbed Satin Face, Matte Edge, Clear Lacquer
F-8 Oxidized Face, & Edge Clear Lacquer		
54.80	74.50	63.00
64.60	86.80	74.10
82.45	122.20	91.20
107.80	160.90	113.15
141.05	207.05	148.15
213.10	292.70	223.65
282.80	375.35	296.85
371.45	477.30	390.00
445.90	564.90	468.45
559.80	698.40	587.65

Add 50% to bronze pricing, for cast brass.

## Roffe No. 515

A B C D E F G H I J K L M N O P Q R S T U V W X Y Z 1 2 3 4 5 6 7 8 9 0 &

DIMENSIONS			
HEIGHT	AVERAGE WIDTH	STROKE	DEPTH
3	2	9/32	9/16
4	2-3/8	3/8	3/4
5	3	15/32	15/16
6	3-1/2	9/16	1-1/8
8	4-3/4	3/4	1-1/2
10	5-7/8	15/16	1-7/8
12	7	1-1/8	2-1/4
14	8-1/8	1-5/16	2-5/8
16	10-1/2	1-1/2	3

ALUMINUM FINISHES				
F-1 Satin Face, Matte Edge, Clear Lacquer	F-1B Buffed Face, Matte Edge, Clear Lacquer	F-4 Satin Face, Matte Edge, Clear Anodized	F-3 Painted Finish  F-4A Satin Face, Filed Edge, Clear Anodized	F-6 Bronze or Black Duranodic; Gold Anodized
F-2 Satin Face, Painted Edge	F-2B Buffed Face, Painted Edge			
16.40	35.05	16.95	19.30	27.15
23.55	48.30	24.30	27.60	36.95
29.35	60.35	30.30	34.05	46.75
35.15	72.35	36.25	40.45	56.55
43.50	93.15	45.95	49.75	70.25
56.15	118.00	58.30	64.30	90.05
70.00	144.35	73.25	84.65	104.05
101.55	195.85	105.15	118.65	142.70
127.05	250.70	132.25	147.25	190.05

BRONZE FINISHES		
F-7 Satin Face, Oxidized Edge, Clear Lacquer	F-7B Buffed Face, Oxidized Edge, Clear Lacquer	F-10 (US-10B) Antique, Oil Rubbed Satin Face, Matte Edge, Clear Lacquer
F-8 Oxidized Face, & Edge Clear Lacquer		
33.95	52.80	35.40
48.00	73.30	50.30
61.20	92.75	64.10
74.40	112.15	77.85
101.30	151.70	105.90
131.95	194.80	137.65
197.85	273.45	207.55
272.30	359.80	285.05
338.70	459.15	355.15

Add 50% to bronze pricing, for cast brass.

### Condensed Classic No. 516

A B C D E F G H I J K L M N O P Q R S T U V W X Y Z 1 2 3 4 5 6 7 8 9 0 &

DIMENSIONS				
HEIGHT	AVERAGE WIDTH	STROKE		DEPTH
3	2-1/8	9/16	7/32	3/8
4	2-5/8	3/4	1/4	3/8
6	3-3/4	7/8	3/8	3/8
8	5	1-1/4	1/2	1/2
10	6-1/4	1-5/8	5/8	5/8
12	7-1/2	1-3/4	3/4	3/4
14	8-3/4	2-1/8	7/8	1
16	10	2-1/2	1	1
18	11-1/2	2-5/8	1-1/8	1

ALUMINUM FINISHES				
F-1 Satin Face, Matte Edge, Clear Lacquer	F-1B Buffed Face, Matte Edge, Clear Lacquer	F-4 Satin Face, Matte Edge, Clear Anodized	F-3 Painted Finish  F-4A Satin Face, Filed Edge, Clear Anodized	F-6 Bronze or Black Duranodic; Gold Anodized
16.40	35.20	17.85	20.25	28.30
20.25	45.15	22.25	27.40	35.20
27.40	65.20	28.60	34.05	48.15
36.50	86.60	38.05	45.05	65.00
48.15	110.85	51.95	60.25	84.35
60.80	136.00	65.35	72.70	101.95
70.85	166.05	75.85	82.00	122.65
91.55	200.10	94.65	105.50	143.30
119.20	273.75	123.10	132.65	186.60

BRONZE FINISHES		
F-7 Satin Face, Oxidized Edge, Clear Lacquer	F-7B Buffed Face, Oxidized Edge, Clear Lacquer	F-10 (US-10B) Antique, Oil Rubbed Satin Face, Matte Edge, Clear Lacquer
42.00	60.90	43.75
55.45	81.00	58.05
71.40	109.55	74.65
94.60	145.70	98.95
125.90	189.50	131.55
169.80	276.70	178.20
187.60	276.70	196.80
233.45	335.25	245.05
303.70	418.15	318.75

Add 50% to bronze pricing, for cast brass.

### Condensed Futura No. 517

A B C D E F G H I J K L M N O P Q R S T U V W X Y Z 1 2 3 4 5 6 7 8 9 0 &

DIMENSIONS				
HEIGHT	AVERAGE WIDTH	STROKE		DEPTH
4	1-3/4	9/16		3/8
6	2-3/4	13/16		3/8
8	3-1/2	1-1/8		1/2
10	5	1-3/8		5/8
12	5-1/2	1-5/8		3/4
14	7	2		1
16	7-1/2	2-1/4		1

ALUMINUM FINISHES				
F-1 Satin Face, Matte Edge, Clear Lacquer	F-1B Buffed Face, Matte Edge, Clear Lacquer	F-4 Satin Face, Matte Edge, Clear Anodized	F-3 Painted Finish  F-4A Satin Face, Filed Edge, Clear Anodized	F-6 Bronze or Black Duranodic; Gold Anodized
19.35	44.25	20.85	23.40	32.75
26.40	63.65	28.65	31.95	45.00
36.05	85.60	39.35	44.25	61.20
50.25	112.35	54.00	60.35	85.80
57.35	131.75	61.75	69.00	98.05
73.30	167.45	81.25	90.85	128.25
98.80	206.40	105.35	116.80	166.40

BRONZE FINISHES		
F-7 Satin Face, Oxidized Edge, Clear Lacquer	F-7B Buffed Face, Oxidized Edge, Clear Lacquer	F-10 (US-10B) Antique, Oil Rubbed Satin Face, Matte Edge, Clear Lacquer
44.55	69.85	46.75
61.50	99.20	63.90
83.90	134.30	87.60
111.30	174.30	116.95
160.95	236.60	168.95
207.65	296.00	217.90
267.35	368.25	280.80

Add 50% to bronze pricing, for cast brass.

### Clarendon Medium No. 518 (upper & lower case available)

A B C D E F G H I J K L M N O P Q R S T U V W X Y Z

a b c d e f g h i j k l m n o p q r s t u v w x y z 1 2 3 4 5 6 7 8 9 0 &

DIMENSIONS				
HEIGHT	AVERAGE WIDTH	STROKE		DEPTH
2	2	1/2	1/4	3/8
3	3	3/4	3/8	3/8
4	4	1	1/2	1/2
6	6	1-1/2	3/4	1/2
8	8	2	1	3/4
10	10	2-1/2	1-1/4	3/4
12	12	3	1-3/4	1
14	14	3-1/8	1-7/8	1
16	16	3-1/2	2	1-1/4

ALUMINUM FINISHES				
F-1 Satin Face, Matte Edge, Clear Lacquer	F-1B Buffed Face, Matte Edge, Clear Lacquer	F-4 Satin Face, Matte Edge, Clear Anodized	F-3 Painted Finish  F-4A Satin Face, Filed Edge, Clear Anodized	F-6 Bronze or Black Duranodic; Gold Anodized
10.85	23.50	11.50	13.80	19.20
16.40	35.20	17.85	20.25	28.30
20.25	45.15	22.25	27.40	35.20
27.40	65.20	28.60	34.05	48.15
36.50	86.60	38.05	45.05	65.00
48.15	110.85	51.95	60.25	84.35
60.80	136.00	65.35	72.70	101.95
70.85	166.05	75.85	82.00	122.65
91.55	200.10	94.65	105.50	143.30

BRONZE FINISHES		
F-7 Satin Face, Oxidized Edge, Clear Lacquer	F-7B Buffed Face, Oxidized Edge, Clear Lacquer	F-10 (US-10B) Antique, Oil Rubbed Satin Face, Matte Edge, Clear Lacquer
28.75	41.50	30.05
42.00	60.90	43.75
55.45	81.00	58.05
71.40	109.55	74.65
94.60	145.70	98.95
125.90	189.50	131.55
169.80	276.70	178.20
187.60	276.70	196.80
233.45	335.25	245.05

Add 50% to bronze pricing, for cast brass.

# Clarendon Medium (Outline Face) No. 525 (capitals only)

A B C D E F G H I J K L M N O P Q R S T U V W X Y Z 1 2 3 4 5 6 7 8 9 0 &

DIMENSIONS				
HEIGHT	AVERAGE WIDTH	STROKE		DEPTH
2	2	1/2	1/4	3/8
3	3	3/4	3/8	3/8
4	4	1	1/2	3/8
5	5	1-1/4	11/16	3/8
6	6	1-1/2	3/4	1/2
8	8	2	1	3/4
10	10	2-1/2	1-1/4	3/4
12	12	3	1-3/4	7/8
14	14	3-1/8	1-7/8	1
16	16	3-1/2	2	1-1/4

ALUMINUM FINISHES				
F-1 Satin Face, Matte Edge, Clear Lacquer	F-1B Buffed Face, Matte Edge, Clear Lacquer	F-4 Satin Face, Matte Edge, Clear Anodized	F-3 Painted Finish  F-4A Satin Face, Filed Edge, Clear Anodized	F-6 Bronze or Black Duranodic; Gold Anodized
20.50	32.95	21.80	24.90	33.30
23.65	42.40	25.20	28.45	38.30
31.35	56.20	33.60	37.65	50.75
35.60	66.60	37.75	42.50	56.40
39.30	76.60	42.15	47.20	62.95
49.55	98.15	53.15	64.90	86.85
65.55	127.55	69.85	85.95	114.55
78.30	152.60	83.75	102.15	137.05
101.15	195.25	107.95	126.50	169.90
117.30	224.90	125.15	146.50	196.60

BRONZE FINISHES		
F-7 Satin Face, Oxidized Edge, Clear Lacquer	F-7B Buffed Face, Oxidized Edge, Clear Lacquer	F-10 (US-10B) Antique, Oil Rubbed Satin Face, Matte Edge, Clear Lacquer
42.15	54.75	44.05
48.25	67.40	50.50
63.15	88.20	67.80
72.65	104.10	75.60
82.10	119.65	85.60
111.65	162.15	116.35
142.10	205.15	148.50
238.45	314.10	250.30
289.70	378.00	304.25
335.55	436.45	352.40

Add 50% to bronze pricing, for cast brass.

# Microgramma Bold Extended No. 519

A B C D E F G H I J K L M N O P Q R S T U V W X Y Z  
1 2 3 4 5 6 7 8 9 0 &

DIMENSIONS			
HEIGHT	AVERAGE WIDTH	STROKE	DEPTH
2	2	9/16	1/4
3	3	7/8	3/8
4	6	1	1/2
6	8-1/2	1-1/2	5/8
8	11	2	3/4
10	14	2-3/4	7/8
12	16	3	1

ALUMINUM FINISHES				
F-1 Satin Face, Matte Edge, Clear Lacquer	F-1B Buffed Face, Matte Edge, Clear Lacquer	F-4 Satin Face, Matte Edge, Clear Anodized	F-3 Painted Finish  F-4A Satin Face, Filed Edge, Clear Anodized	F-6 Bronze or Black Duranodic; Gold Anodized
12.10	24.65	12.95	14.45	19.55
16.40	35.05	16.95	19.30	27.15
23.55	48.30	24.30	27.60	36.95
35.15	72.35	36.25	40.45	56.55
43.50	93.15	45.95	49.75	70.25
56.15	118.00	58.30	64.30	90.05
70.00	144.35	73.25	84.65	104.05

BRONZE FINISHES		
F-7 Satin Face, Oxidized Edge, Clear Lacquer	F-7B Buffed Face, Oxidized Edge, Clear Lacquer	F-10 (US-10B) Antique, Oil Rubbed Satin Face, Matte Edge, Clear Lacquer
25.20	37.90	26.45
33.95	52.80	35.40
48.00	73.30	50.30
74.40	112.15	77.85
101.30	151.70	105.90
131.95	194.80	137.65
197.85	273.45	207.55

Add 50% to bronze pricing, for cast brass.

# Helvetica Bold Extended No. 520

A B C D E F G H I J K L M N O P Q R S T U V W X Y Z  
1 2 3 4 5 6 7 8 9 0 &

DIMENSIONS				
HEIGHT	AVERAGE WIDTH	STROKE		DEPTH
4	5-3/4	1-11/16	13/16	1/2
6	8-1/2	2-1/4	1-5/16	3/4
9	12-3/4	3-1/4	1-7/8	1
12	17	4-1/2	2-3/4	1-1/4
15	21	6-1/4	3-1/8	1-1/2

ALUMINUM FINISHES				
F-1 Satin Face, Matte Edge, Clear Lacquer	F-1B Buffed Face, Matte Edge, Clear Lacquer	F-4 Satin Face, Matte Edge, Clear Anodized	F-3 Painted Finish  F-4A Satin Face, Filed Edge, Clear Anodized	F-6 Bronze or Black Duranodic; Gold Anodized
23.55	48.30	24.30	27.60	36.95
35.15	72.35	36.25	40.45	56.55
52.60	108.35	54.75	62.45	80.30
70.00	144.35	73.25	84.65	104.05
114.30	223.30	118.70	132.95	166.40

BRONZE FINISHES		
F-7 Satin Face, Oxidized Edge, Clear Lacquer	F-7B Buffed Face, Oxidized Edge, Clear Lacquer	F-10 (US-10B) Antique, Oil Rubbed Satin Face, Matte Edge, Clear Lacquer
48.00	73.30	50.30
74.40	112.15	77.85
136.10	192.80	142.70
197.85	273.45	207.55
305.50	399.50	320.10

Add 50% to bronze pricing, for cast brass.



**Helvetica Medium No. 521 (upper and lower case available)**

**A B C D E F G H I J K L M N O P Q R S T U V W X Y Z 1 2 3 4 5 6 7 8 9 0 &  
a b c d e f g h i j k l m n o p q r s t u v w x y z**

Add 50% to bronze pricing, for cast brass.

DIMENSIONS			
HEIGHT	AVERAGE WIDTH	STROKE	DEPTH
2	1-3/4	3/8	3/8
3	2-5/8	9/16	3/8
4	3-1/2	3/4	3/8
5	4-3/8	1	3/8
6	5-1/4	1-1/8	1/2
8	7	1-1/2	5/8
9	8	1-5/8	5/8
10	8-3/4	1-3/4	3/4
12	10-1/2	2-1/4	1
14	12-1/4	2-5/8	1
15	13-1/4	2-7/8	1
16	14	3	1-1/4
18	15-3/4	3-1/4	1-1/2
24	21	4-1/2	2

ALUMINUM FINISHES				
F-1 Satin Face, Matte Edge, Clear Lacquer	F-1B Buffed Face, Matte Edge, Clear Lacquer	F-4 Satin Face, Matte Edge, Clear Anodized	F-3 Painted Finish F-4A Satin Face, Filed Edge, Clear Anodized	F-6 Bronze or Black Duranodic; Gold Anodized
17.05	29.55	19.00	20.45	28.70
18.15	36.60	20.05	21.70	30.80
19.35	44.25	20.85	23.40	32.75
22.85	53.95	24.55	27.75	39.00
26.40	63.65	28.65	31.95	45.00
36.05	85.60	39.35	44.25	61.20
43.20	99.10	46.85	52.20	73.05
50.25	112.35	54.00	60.35	85.80
57.35	131.75	61.75	69.00	98.05
73.30	167.45	81.25	90.85	128.25
85.60	186.75	93.60	103.60	147.20
98.80	206.40	105.35	116.80	166.40
125.35	278.25	133.15	145.65	212.00
182.50	332.60	196.55	221.15	298.00

BRONZE FINISHES		
F-7 Satin Face, Oxidized Edge, Clear Lacquer	F-7B Buffed Face, Oxidized Edge, Clear Lacquer	F-10 (US-10B) Antique, Oil Rubbed Satin Face, Matte Edge, Clear Lacquer
40.05	52.60	41.70
42.20	61.25	44.05
44.55	69.85	46.75
53.20	84.75	55.35
61.50	99.20	63.90
83.90	134.30	87.60
97.50	154.10	101.95
111.30	174.30	116.95
160.95	236.60	168.95
207.65	296.00	217.90
237.45	332.50	249.30
267.35	368.25	280.80
333.60	447.05	350.25
472.80	616.75	495.00

**Helvetica Regular No. 524 (upper and lower case available)**

**A B C D E F G H I J K L M N O P Q R S T U V W X Y Z & 1 2 3 4 5 6 7 8 9 0  
a b c d e f g h i j k l m n o p q r s t u v w x y z**

Add 50% to bronze pricing, for cast brass.

DIMENSIONS			
HEIGHT	AVERAGE WIDTH	STROKE	DEPTH
2	1-3/4	5/16	3/8
3	2-5/8	7/16	3/8
4	3-1/2	9/16	3/8
6	5-1/4	7/8	1/2
8	7	1-1/8	5/8
10	8-3/4	1-7/16	3/4
12	10-1/2	1-3/4	1
14	12-1/4	2	1
16	14	2-5/16	1-1/4
18	15-3/4	2-9/16	1-1/2

ALUMINUM FINISHES				
F-1 Satin Face, Matte Edge, Clear Lacquer	F-1B Buffed Face, Matte Edge, Clear Lacquer	F-4 Satin Face, Matte Edge, Clear Anodized	F-3 Painted Finish F-4A Satin Face, Filed Edge, Clear Anodized	F-6 Bronze or Black Duranodic; Gold Anodized
17.05	29.55	19.00	20.45	28.70
18.15	36.60	20.05	21.70	30.80
19.35	44.25	20.85	23.40	32.75
26.40	63.65	28.65	31.95	45.00
36.05	85.60	39.35	44.25	61.20
50.25	112.35	54.00	60.35	85.80
57.35	131.75	61.75	69.00	98.05
73.30	167.45	81.25	90.85	128.25
98.80	206.40	105.35	116.80	166.40
125.35	278.25	133.15	145.65	212.00

BRONZE FINISHES		
F-7 Satin Face, Oxidized Edge, Clear Lacquer	F-7B Buffed Face, Oxidized Edge, Clear Lacquer	F-10 (US-10B) Antique, Oil Rubbed Satin Face, Matte Edge, Clear Lacquer
40.05	52.60	41.70
42.20	61.25	44.05
44.55	69.85	46.75
61.50	99.20	63.90
83.90	134.30	87.60
111.30	174.30	116.95
160.95	236.60	168.95
207.65	296.00	217.90
267.35	368.25	280.80
333.60	447.05	350.25

**Helvetica Bold No. 531 (upper and lower case available)**

**A B C D E F G H I J K L M N O P Q R S T U V W X Y Z &  
a b c d e f g h i j k l m n o p q r s t u v w x y z 1 2 3 4 5 6 7 8 9 0**

DIMENSIONS			
HEIGHT	AVERAGE WIDTH	STROKE	DEPTH
3	2-5/8	11/16	3/8
4	3-1/2	1-5/16	3/8
6	5-1/4	1-7/8	1/2
8	7	2-1/2	5/8
10	8-3/4	3-1/8	3/4
12	10-1/2	3-3/4	1
14	12-1/4	4-3/8	1
16	14	5	1-1/4
18	15-3/4	5-5/8	1-1/2

ALUMINUM FINISHES				
F-1 Satin Face, Matte Edge, Clear Lacquer	F-1B Buffed Face, Matte Edge, Clear Lacquer	F-4 Satin Face, Matte Edge, Clear Anodized	F-3 Painted Finish F-4A Satin Face, Filed Edge, Clear Anodized	F-6 Bronze or Black Duranodic; Gold Anodized
18.15	36.60	20.05	21.70	30.80
19.35	44.25	20.85	23.40	32.75
26.40	63.65	28.65	31.95	45.00
36.05	85.60	39.35	44.25	61.20
50.25	112.35	54.00	60.35	85.80
57.35	131.75	61.75	69.00	98.05
73.30	167.45	81.25	90.85	128.25
98.80	206.40	105.35	116.80	166.40
125.35	278.25	133.15	145.65	212.00

BRONZE FINISHES		
F-7 Satin Face, Oxidized Edge, Clear Lacquer	F-7B Buffed Face, Oxidized Edge, Clear Lacquer	F-10 (US-10B) Antique, Oil Rubbed Satin Face, Matte Edge, Clear Lacquer
42.20	61.25	44.05
44.55	69.85	46.75
61.50	99.20	63.90
83.90	134.30	87.60
111.30	174.30	116.95
160.95	236.60	168.95
207.65	296.00	217.90
267.35	368.25	280.80
333.60	447.05	350.25

Add 50% to bronze pricing, for cast brass.

## Friz Quadrata No. 526 (upper and lower case available)

A B C D E F G H I J K L M N O P Q R S T U V W X Y Z & 1 2 3 4 5 6 7 8 9 0  
a b c d e f g h i j k l m n o p q r s t u v w x y z

DIMENSIONS			
HEIGHT	AVERAGE WIDTH	STROKE	DEPTH
2	1-3/4	5/16	3/8
3	2-5/8	7/16	3/8
4	3-1/2	9/16	3/8
6	5-1/4	13/16	1/2
8	7	1-1/8	5/8
10	8-3/4	1-3/8	3/4
12	10-1/2	1-5/8	1
14	12-1/4	1-7/8	1
16	14	2-3/16	1-1/4
18	15-3/4	2-1/2	1-1/2

ALUMINUM FINISHES				
F-1 Satin Face, Matte Edge, Clear Lacquer	F-1B Buffed Face, Matte Edge, Clear Lacquer	F-4 Satin Face, Matte Edge, Clear Anodized	F-3 Painted Finish F-4A Satin Face, Filed Edge, Clear Anodized	F-6 Bronze or Black Duranodic; Gold Anodized
17.05	29.55	19.00	20.45	28.70
18.15	36.60	20.05	21.70	30.80
19.35	44.25	20.85	23.40	32.75
26.40	63.65	28.65	31.95	45.00
36.05	85.60	39.35	44.25	61.20
50.25	112.35	54.00	60.35	85.80
57.35	131.75	61.75	69.00	98.05
73.30	167.45	81.25	90.85	128.25
98.80	206.40	105.35	116.80	166.40
125.35	278.25	133.15	145.65	212.00

BRONZE FINISHES		
F-7 Satin Face, Oxidized Edge, Clear Lacquer	F-7B Buffed Face, Oxidized Edge, Clear Lacquer	F-10 (US-10B) Antique, Oil Rubbed Satin Face, Matte Edge, Clear Lacquer
40.05	52.60	41.70
42.20	61.25	44.05
44.55	69.85	46.75
61.50	99.20	63.90
83.90	134.30	87.60
111.30	174.30	116.95
160.95	236.60	168.95
207.65	296.00	217.90
267.35	368.25	280.80
333.60	447.05	350.25

Add 50% to bronze pricing, for cast brass.

## Optima No. 530

A B C D E F G H I J K L M N O P Q R S T U V W X Y Z 1 2 3 4 5 6 7 8 9 0 &  
a b c d e f g h i j k l m n o p q r s t u v w x y z

DIMENSIONS			
HEIGHT	AVERAGE WIDTH	STROKE	DEPTH
2	1-3/4	1/4 1/8	1/4
3	2-5/8	3/8 3/16	3/8
4	3-1/2	1/2 1/4	3/8
6	5-1/4	3/4 3/8	3/8
8	7	1 1/2	1/2
10	8-3/4	1-1/4 5/8	1/2
12	10-1/2	1-1/2 3/4	1/2
14	12-1/4	1-3/4 7/8	3/4
16	14	2 1	1

ALUMINUM FINISHES				
F-1 Satin Face, Matte Edge, Clear Lacquer	F-1B Buffed Face, Matte Edge, Clear Lacquer	F-4 Satin Face, Matte Edge, Clear Anodized	F-3 Painted Finish F-4A Satin Face, Filed Edge, Clear Anodized	F-6 Bronze or Black Duranodic; Gold Anodized
17.05	29.55	19.00	20.45	28.70
18.15	36.60	20.05	21.70	30.80
19.35	44.25	20.85	23.40	32.75
26.40	63.65	28.65	31.95	45.00
36.05	85.60	39.35	44.25	61.20
50.25	112.35	54.00	60.35	85.80
57.35	131.75	61.75	69.00	98.05
98.80	206.40	105.35	116.80	166.40
125.35	278.25	133.15	145.65	212.00

BRONZE FINISHES		
F-7 Satin Face, Oxidized Edge, Clear Lacquer	F-7B Buffed Face, Oxidized Edge, Clear Lacquer	F-10 (US-10B) Antique, Oil Rubbed Satin Face, Matte Edge, Clear Lacquer
40.05	52.60	41.70
42.20	61.25	44.05
44.55	69.85	46.75
61.50	99.20	63.90
83.90	134.30	87.60
111.30	174.30	116.95
160.95	236.60	168.95
267.35	368.25	280.80
333.60	447.05	350.25

Add 50% to bronze pricing, for cast brass.

## Palatino No. 527 (upper & lower case available)

A B C D E F G H I J K L M N O P Q R S T U V W X Y Z & 1 2 3 4 5 6 7 8 9 0  
a b c d e f g h i j k l m n o p q r s t u v w x y z

DIMENSIONS			
HEIGHT	AVERAGE WIDTH	STROKE	DEPTH
2	2-1/8	1/4 1/8	3/8
3	3-3/16	7/16 3/16	3/8
4	4-1/4	1/2 1/4	3/8
6	6-3/8	7/8 3/8	1/2
8	8-1/2	1-1/16 1/2	3/4
10	10-5/8	1-3/8 5/8	1
12	12-3/4	1-5/8 3/4	1
14	14-7/8	1-7/8 1	1
16	17	2-1/8 1	1
18	19-1/8	2-7/16 1-1/8	1-1/2

ALUMINUM FINISHES				
F-1 Satin Face, Matte Edge, Clear Lacquer	F-1B Buffed Face, Matte Edge, Clear Lacquer	F-4 Satin Face, Matte Edge, Clear Anodized	F-3 Painted Finish F-4A Satin Face, Filed Edge, Clear Anodized	F-6 Bronze or Black Duranodic; Gold Anodized
10.85	23.50	11.50	13.80	19.20
16.40	35.20	17.85	20.25	28.30
20.25	45.15	22.25	27.40	35.20
27.40	65.20	28.60	34.05	48.15
36.50	86.60	38.05	45.05	65.00
48.15	110.85	51.95	60.25	84.35
60.80	136.00	65.35	72.70	101.95
70.85	166.05	75.85	82.00	122.65
91.55	200.10	94.65	105.50	143.30
119.20	273.75	123.10	132.65	186.60

BRONZE FINISHES		
F-7 Satin Face, Oxidized Edge, Clear Lacquer	F-7B Buffed Face, Oxidized Edge, Clear Lacquer	F-10 (US-10B) Antique, Oil Rubbed Satin Face, Matte Edge, Clear Lacquer
28.75	41.50	30.05
42.00	60.90	43.75
55.45	81.00	58.05
71.40	109.55	74.65
94.60	145.70	98.95
125.90	189.50	131.55
169.80	276.70	178.20
187.60	276.70	196.80
233.45	335.25	245.05
303.70	418.15	318.75

Add 50% to bronze pricing, for cast brass.

### Times Roman No. 528 (upper & lower case available)

A B C D E F G H I J K L M N O P Q R S T U V W X Y Z 1 2 3 4 5 6 7 8 9 0 &  
a b c d e f g h i j k l m n o p q r s t u v w x y z

Add 50% to bronze pricing, for cast brass.

DIMENSIONS				
HEIGHT	AVERAGE WIDTH	STROKE		DEPTH
2	1-7/8	5/16	1/8	3/8
3	2-7/8	1/2	3/16	3/8
4	3-3/4	5/8	1/4	3/8
6	5-3/4	1	3/8	1/2
8	7-1/2	1-1/4	1/2	3/4
10	9-1/2	1-1/2	5/8	3/4
12	11-1/2	2	3/4	1
14	13-1/2	2-1/4	7/8	1
16	15	2-1/2	1	1
18	17-1/4	3	1-1/8	1-1/2
24	22-1/2	4-1/8	1-3/8	2

ALUMINUM FINISHES				
F-1 Satin Face, Matte Edge, Clear Lacquer	F-1B Buffed Face, Matte Edge, Clear Lacquer	F-4 Satin Face, Matte Edge, Clear Anodized	F-3 Painted Finish  F-4A Satin Face, Filed Edge, Clear Anodized	F-6 Bronze or Black Duranodic; Gold Anodized
10.85	23.50	11.50	13.80	19.20
16.40	35.20	17.85	20.25	28.30
20.25	45.15	22.25	27.40	35.20
27.40	65.20	28.60	34.05	48.15
36.50	86.60	38.05	45.05	65.00
48.15	110.85	51.95	60.25	84.35
60.80	136.00	65.35	72.70	101.95
70.85	166.05	75.85	82.00	122.65
91.55	200.10	94.65	105.50	143.30
119.20	273.75	123.10	132.65	186.60
182.00	332.60	196.55	221.15	298.00

BRONZE FINISHES		
F-7 Satin Face, Oxidized Edge, Clear Lacquer	F-7B Buffed Face, Oxidized Edge, Clear Lacquer	F-10 (US-10B) Antique, Oil Rubbed Satin Face, Matte Edge, Clear Lacquer
28.75	41.50	30.05
42.00	60.90	43.75
55.45	81.00	58.05
71.40	109.55	74.65
94.60	145.70	98.95
125.90	189.50	131.55
169.80	276.70	178.20
187.60	276.70	196.80
233.45	335.25	245.05
303.70	418.15	318.75
472.80	616.75	495.00

### Times Bold No. 532 (upper & lower case available)

A B C D E F G H I J K L M N O P Q R S T U V W X Y Z 1 2 3 4 5 6 7 8 9 0 &  
a b c d e f g h i j k l m n o p q r s t u v w x y z

Add 50% to bronze pricing, for cast brass.

DIMENSIONS				
HEIGHT	AVERAGE WIDTH	STROKE		DEPTH
3	2-7/8	11/16	1/8	3/8
4	3-3/4	15/16	3/16	3/8
6	5-3/4	1-1/2	3/8	1/2
8	7-1/2	1-7/8	1/2	3/4
10	9-1/2	2-3/8	5/8	3/4
12	11-1/2	2-7/8	3/4	1
14	13-1/2	3-3/8	15/16	1
16	15	3-7/8	1-1/8	1
18	17-1/4	4	1-1/4	1-1/2

ALUMINUM FINISHES				
F-1 Satin Face, Matte Edge, Clear Lacquer	F-1B Buffed Face, Matte Edge, Clear Lacquer	F-4 Satin Face, Matte Edge, Clear Anodized	F-3 Painted Finish  F-4A Satin Face, Filed Edge, Clear Anodized	F-6 Bronze or Black Duranodic; Gold Anodized
16.40	35.20	17.85	20.25	28.30
20.25	45.15	20.95	27.40	35.20
27.40	65.20	28.60	34.05	48.15
36.50	86.60	38.05	45.05	65.00
48.15	110.90	51.95	60.25	84.35
60.80	136.00	65.35	72.70	101.95
70.85	166.05	75.90	82.00	122.65
91.55	200.10	94.65	105.50	143.30
119.20	273.75	123.10	132.65	186.60

BRONZE FINISHES		
F-7 Satin Face, Oxidized Edge, Clear Lacquer	F-7B Buffed Face, Oxidized Edge, Clear Lacquer	F-10 (US-10B) Antique, Oil Rubbed Satin Face, Matte Edge, Clear Lacquer
42.00	60.90	43.75
55.45	81.00	58.05
71.40	109.55	74.65
94.60	145.70	98.95
125.90	189.50	131.55
169.80	276.70	178.20
187.60	276.70	196.80
233.45	335.25	245.05
303.70	418.15	318.75

### Optima Semi-Bold No. 533

A B C D E F G H I J K L M N O P Q R S T U V W X Y Z 1 2 3 4 5 6 7 8 9 0 &  
a b c d e f g h i j k l m n o p q r s t u v w x y z

Add 50% to bronze pricing, for cast brass.

DIMENSIONS				
HEIGHT	AVERAGE WIDTH	STROKE		DEPTH
3	2-5/8	7/8	7/16	3/8
4	3-1/2	1-1/8	5/8	3/8
6	5-1/4	1-3/4	15/16	1/2
8	7	2-5/16	1-1/4	5/8
10	8-3/4	2-7/8	1-1/2	3/4
12	10-1/2	3-7/16	1-7/8	1
14	12-1/4	4-1/8	2-3/16	1
16	14	4-9/16	2-7/16	1-1/2
18	16-1/2	5-13/16	2-13/16	1-1/2

ALUMINUM FINISHES				
F-1 Satin Face, Matte Edge, Clear Lacquer	F-1B Buffed Face, Matte Edge, Clear Lacquer	F-4 Satin Face, Matte Edge, Clear Anodized	F-3 Painted Finish  F-4A Satin Face, Filed Edge, Clear Anodized	F-6 Bronze or Black Duranodic; Gold Anodized
18.15	36.60	20.05	21.70	30.80
19.35	44.25	20.85	23.40	32.75
26.40	63.65	28.65	31.95	45.00
36.05	85.60	39.35	44.25	61.20
50.25	112.35	54.00	60.35	85.80
57.35	131.75	61.75	69.00	98.05
73.30	167.45	81.25	90.85	128.25
98.80	206.40	105.35	116.80	166.40
125.35	278.25	133.15	145.65	212.00

BRONZE FINISHES		
F-7 Satin Face, Oxidized Edge, Clear Lacquer	F-7B Buffed Face, Oxidized Edge, Clear Lacquer	F-10 (US-10B) Antique, Oil Rubbed Satin Face, Matte Edge, Clear Lacquer
42.20	61.25	44.05
44.55	69.85	46.75
61.50	99.20	63.90
83.90	134.30	87.60
111.30	174.30	116.95
160.95	236.60	168.95
207.65	296.00	217.90
237.45	332.50	249.30
333.60	447.05	350.25

**Garamond 534 (upper & lower case available)**

A B C D E F G H I J K L M N O P Q R S T U V W X Y Z 1 2 3 4 5 6 7 8 9 0 &  
a b c d e f g h i j k l m n o p q r s t u v w x y z

DIMENSIONS				
HEIGHT	AVERAGE WIDTH	STROKE		DEPTH
3	2-7/8	9/16	3/8	3/8
4	3-3/4	3/4	1/4	3/8
6	5-3/4	1-1/16	5/16	1/2
8	7-1/2	1-7/16	7/16	3/4
10	9-1/2	2-3/16	9/16	3/4
12	11-1/2	2-3/16	11/16	1
14	13-1/2	2-9/16	3/4	1
16	15	2-7/8	7/8	1
18	17-1/4	3-1/4	1	1-1/2

ALUMINUM FINISHES				
F-1 Satin Face, Matte Edge, Clear Lacquer	F-1B Buffed Face, Matte Edge, Clear Lacquer	F-4 Satin Face, Matte Edge, Clear Anodized	F-3 Painted Finish  F-4A Satin Face, Filed Edge, Clear Anodized	F-6 Bronze or Black Duranodic; Gold Anodized
F-2 Satin Face, Painted Edge	F-2B Buffed Face, Painted Edge			
16.40	35.20	17.85	20.25	28.30
20.25	45.15	22.25	27.40	35.20
27.40	65.20	28.60	34.05	48.15
36.50	86.60	38.05	45.05	65.00
48.15	110.85	51.95	60.25	84.35
60.80	136.00	65.35	72.70	101.95
70.85	166.05	75.85	82.00	122.65
91.55	200.10	94.65	105.50	143.30
119.20	273.75	123.10	132.65	186.60

BRONZE FINISHES		
F-7 Satin Face, Oxidized Edge, Clear Lacquer	F-7B Buffed Face, Oxidized Edge, Clear Lacquer	F-10 (US-10B) Antique, Oil Rubbed Satin Face, Matte Edge, Clear Lacquer
F-8 Oxidized Face, & Edge Clear Lacquer		
42.00	60.90	43.75
55.45	81.00	58.05
71.40	109.55	74.65
94.60	145.70	98.95
125.90	189.50	131.55
169.80	276.70	178.20
187.60	276.70	196.80
233.45	335.25	245.05
303.70	418.15	318.75

Add 50% to bronze pricing, for cast brass.

**Arial Regular No. 535 (upper & lower case available)**

A B C D E F G H I J K L M N O P Q R S T U V W X Y Z & 1 2 3 4 5 6 7 8 9 0  
a b c d e f g h i j k l m n o p q r s t u v w x y z

DIMENSIONS				
HEIGHT	AVERAGE WIDTH	STROKE		DEPTH
3	2-5/8	9/16	3/8	3/8
4	3-1/2	3/4	3/8	3/8
6	5-1/4	1-1/8	1/2	1/2
8	7	1-1/2	5/8	5/8
10	8-3/4	1-3/4	3/4	3/4
12	10-1/2	2-1/4	1	1
14	12-1/4	2-5/8	1	1
16	14	3	1-1/4	1-1/4
18	15-3/4	3-1/4	1-1/2	1-1/2
24	21	4-1/2	2	2

ALUMINUM FINISHES				
F-1 Satin Face, Matte Edge, Clear Lacquer	F-1B Buffed Face, Matte Edge, Clear Lacquer	F-4 Satin Face, Matte Edge, Clear Anodized	F-3 Painted Finish  F-4A Satin Face, Filed Edge, Clear Anodized	F-6 Bronze or Black Duranodic; Gold Anodized
F-2 Satin Face, Painted Edge	F-2B Buffed Face, Painted Edge			
18.15	36.60	20.05	21.70	30.80
19.35	44.25	20.85	23.40	32.75
26.40	63.65	28.65	31.95	45.00
36.05	85.60	39.35	44.25	61.20
50.25	112.35	54.00	60.35	85.80
57.35	131.75	61.75	69.00	98.05
73.30	167.45	81.25	90.85	128.25
98.80	206.40	105.35	116.80	166.40
125.35	278.25	133.15	145.65	212.00
182.50	332.60	196.55	221.15	298.00

BRONZE FINISHES		
F-7 Satin Face, Oxidized Edge, Clear Lacquer	F-7B Buffed Face, Oxidized Edge, Clear Lacquer	F-10 (US-10B) Antique, Oil Rubbed Satin Face, Matte Edge, Clear Lacquer
F-8 Oxidized Face, & Edge Clear Lacquer		
42.20	61.25	44.05
44.55	69.85	46.75
61.50	99.20	63.90
83.90	134.30	87.60
111.30	174.30	116.95
160.95	236.60	168.95
207.65	296.00	217.90
267.35	368.25	280.80
333.60	447.05	350.25
472.80	616.75	495.00

Add 50% to bronze pricing, for cast brass.

**Arial Bold No. 536 (upper & lower case available)**

A B C D E F G H I J K L M N O P Q R S T U V W X Y Z & 1 2 3 4 5 6 7 8 9 0  
a b c d e f g h i j k l m n o p q r s t u v w x y z

DIMENSIONS				
HEIGHT	AVERAGE WIDTH	STROKE		DEPTH
3	2-5/8	9/16	3/8	3/8
4	3-1/2	3/4	3/8	3/8
6	5-1/4	1-1/8	1/2	1/2
8	7	1-1/2	5/8	5/8
10	8-3/4	1-3/4	3/4	3/4
12	10-1/2	2-1/4	1	1
14	12-1/4	2-5/8	1	1
16	14	3	1-1/4	1-1/4
18	15-3/4	3-1/4	1-1/2	1-1/2
24	21	4-1/2	2	2

ALUMINUM FINISHES				
F-1 Satin Face, Matte Edge, Clear Lacquer	F-1B Buffed Face, Matte Edge, Clear Lacquer	F-4 Satin Face, Matte Edge, Clear Anodized	F-3 Painted Finish  F-4A Satin Face, Filed Edge, Clear Anodized	F-6 Bronze or Black Duranodic; Gold Anodized
F-2 Satin Face, Painted Edge	F-2B Buffed Face, Painted Edge			
18.15	36.60	20.05	21.70	30.80
19.35	44.25	20.85	23.40	32.75
26.40	63.65	28.65	31.95	45.00
36.05	85.60	39.35	44.25	61.20
50.25	112.35	54.00	60.35	85.80
57.35	131.75	61.75	69.00	98.05
73.30	167.45	81.25	90.85	128.25
98.80	206.40	105.35	116.80	166.40
125.35	278.25	133.15	145.65	212.00
182.50	332.60	196.55	221.15	298.00

BRONZE FINISHES		
F-7 Satin Face, Oxidized Edge, Clear Lacquer	F-7B Buffed Face, Oxidized Edge, Clear Lacquer	F-10 (US-10B) Antique, Oil Rubbed Satin Face, Matte Edge, Clear Lacquer
F-8 Oxidized Face, & Edge Clear Lacquer		
42.20	61.25	44.05
44.55	69.85	46.75
61.50	99.20	63.90
83.90	134.30	87.60
111.30	174.30	116.95
160.95	236.60	168.95
207.65	296.00	217.90
267.35	368.25	280.80
333.60	447.05	350.25
472.80	616.75	495.00

Add 50% to bronze pricing, for cast brass.

# Fabricated Stainless Mirror Face and Edges on Block Letters

HEIGHT	1/2" DEPTH		1" DEPTH		2" DEPTH	
	Satin	Mirror	Satin	Mirror	Satin	Mirror
3"	29.90	31.30				
4"	39.10	41.30				
5"	50.70	54.05				
6"	61.80	66.20	66.45	71.95		
7"	73.80	79.50	79.20	86.15		
8"	88.30	95.80	95.05	104.10		
9"	104.15	113.80	111.30	122.40		
10"	121.25	133.20	129.10	142.70		
11"	135.95	149.65	143.15	158.45		
12"	150.85	166.55	160.95	178.00	179.15	200.75
13"	168.25	186.25	180.50	201.05	200.95	225.75

LED Back Lighting Available Contact Our Sales Department For Pricing

HEIGHT	1/2" DEPTH		1" DEPTH		2" DEPTH	
	Satin	Mirror	Satin	Mirror	Satin	Mirror
14"	187.15	207.85	198.55	221.70	232.80	248.25
15"	210.40	233.45	224.20	251.35	247.75	279.80
16"	228.80	255.55	243.25	273.05	266.50	303.40
17"	256.75	288.05	275.55	307.00	299.15	339.25
18"	275.90	309.85	293.15	330.70	321.35	364.85
19"	318.50	358.80	319.80	361.60	349.60	397.70
20"	344.50	389.80	348.70	395.10	380.85	433.10
21"	350.60	396.05	372.80	422.95	405.75	462.80
22"	371.90	420.50	390.00	442.50	424.55	484.25
23"	407.60	462.30	431.85	491.65	467.80	535.05
24"	434.60	493.55	457.55	521.25	495.20	566.85

Letters are reverse channel fabricated letters. Stainless steel finishes available include mirror polished finish on face and edges or satin finish on face and edges. Add 20% for serif letters. Add 20% for titanium finish (gold). Mountings can be done in any of A.R.K. Ramos standard mountings. Templates are available on request and at an additional charge.

## Precision-Cut Letters

### Aluminum

HEIGHT	1/8"	1/4"	3/8"	1/2"
2"	10.20	12.50	19.80	28.60
3"	13.60	15.95	24.20	34.10
4"	19.30	21.55	33.00	40.70
5"	21.55	26.05	39.60	45.10
6"	24.95	31.80	42.90	50.60
7"	28.35	38.60	51.70	57.20
8"	30.70	40.80	56.10	60.50
9"	32.90	43.10	61.60	67.10
10"	38.60	47.60	66.00	71.50
11"	42.00	51.05	71.50	82.50
12"	45.30	54.45	78.10	90.20
13"	51.00	58.95	84.70	103.40
14"	56.65	64.65	92.40	114.40
15"	67.95	71.40	104.50	126.50
16"	72.60	76.00	115.50	138.60
17"	80.50	83.90	125.40	156.20
18"	N/A	86.10	274.35	172.70

### Brass

HEIGHT	1/8"	1/4"	3/8"	1/2"
2"	16.50	26.40	35.20	38.50
3"	19.80	29.70	41.80	42.90
4"	24.20	36.30	48.40	63.80
5"	29.70	45.10	61.60	79.20
6"	35.20	55.00	74.80	93.50
7"	40.70	66.00	92.40	107.80
8"	48.40	78.10	111.10	130.90
9"	58.30	90.20	129.80	159.50
10"	68.20	104.50	149.60	193.60
11"	77.00	119.90	169.40	231.00
12"	86.90	135.30	192.50	269.50
13"	96.80	154.00	215.60	309.10
14"	106.70	173.80	243.10	350.90
15"	119.90	194.70	271.70	396.00
16"	132.00	216.70	303.60	451.00
17"	148.50	240.90	337.70	508.20
18"	162.80	265.10	372.90	568.70

### Bronze

HEIGHT	1/8"	1/4"	3/8"	1/2"
2"	17.60	27.50	36.30	38.50
3"	20.90	30.80	41.80	42.90
4"	24.20	38.50	49.50	63.80
5"	30.80	48.40	63.80	79.20
6"	35.20	57.20	78.10	95.70
7"	42.90	67.10	89.10	113.30
8"	50.60	79.20	107.80	137.50
9"	61.60	92.40	129.80	166.10
10"	71.50	105.60	154.00	195.80
11"	81.40	121.00	176.00	229.90
12"	92.40	137.50	198.00	268.40
13"	103.40	157.30	223.30	312.40
14"	113.30	177.10	251.90	356.40
15"	125.40	198.00	282.70	404.80
16"	139.70	221.10	314.60	455.40
17"	156.20	244.20	348.70	508.20
18"	173.80	269.50	386.10	563.20

### Stainless Steel

HEIGHT	1/8"	1/4"	3/8"	1/2"
2"	13.20	20.90	29.70	41.80
3"	15.40	24.20	33.00	46.20
4"	22.00	30.80	42.90	60.50
5"	27.50	37.40	49.50	69.30
6"	33.00	42.90	57.20	80.30
7"	39.60	52.80	68.20	94.60
8"	44.00	59.40	77.00	110.00
9"	49.50	67.10	86.90	124.30
10"	55.00	75.90	96.80	138.60
11"	60.50	85.80	108.90	156.20
12"	69.30	95.70	122.10	173.80
13"	78.10	105.60	134.20	192.50
14"	88.00	116.60	148.50	212.30
15"	100.10	127.60	162.80	275.60
16"	114.40	139.70	179.30	256.30
17"	128.70	151.80	195.80	286.00
18"	144.10	166.10	213.40	312.40

Cut metal plate letters are priced individually based on their longest dimension. Pricing is for our standard satin finish (satin polished faces, matte sandblasted edges and clear topcoat). Add \$.50 net per inch for standard painted colors or \$2.00 net per inch for mirror-buffed faces. Contact our sales staff for pricing on script or connected letters. Add 30% (net) for color anodizing (black, gold, bronze.) Add 15% (net) for clear anodizing.

# Fabricated Aluminum Letters

Satin Face, Matte Edge or Painted Finish on Block Letters

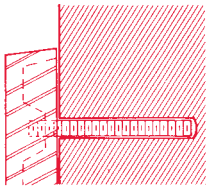
HEIGHT (Inches)	LETTER DEPTH (Inches)			
	1" or 2"	3	4	6
8"	121.00	145.00		
10"	136.00	143.00		
12"	153.00	158.00	181.00	
14"	184.00	210.00	222.00	257.00
16"	207.00	242.00	253.00	287.00
18"	218.00	251.00	274.00	311.00
20"	251.00	298.00	326.00	361.00
22"	266.00	311.00	372.00	387.00
24"	298.00	337.00	382.00	413.00
26"	302.00	356.00	393.00	441.00
28"	337.00	380.00	423.00	469.00

HEIGHT (Inches)	LETTER DEPTH (Inches)			
	1" or 2"	3	4	6
30"	356.00	389.00	432.00	482.00
32"	387.00	430.00	449.00	499.00
34"	413.00	445.00	480.00	531.00
36"	438.00	469.00	499.00	553.00
42"	471.00	521.00	566.00	631.00
48"	514.00	566.00	618.00	693.00
54"		693.00	769.00	862.00
60"		769.00	858.00	950.00
66"		907.00	996.00	1106.00
72"		998.00	1106.00	1227.00

LED Back Lighting Available Contact Our Sales Department For Pricing

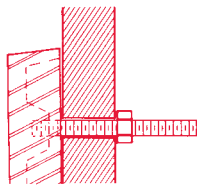
Pricing is for block letter styles in either satin aluminum or painted finish using standard color. Letters should be priced by their longest dimension (height or width). Add 30% to above pricing for serif letters. Contact our sales staff for pricing on script or connected letters. Add 30% for color anodizing (bronze, gold or black) and 15% for clear anodizing (net).

## Letter Mounting Accessories



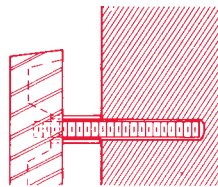
**FM-4**

Flush Mount with threaded studs set in adhesive



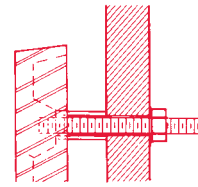
**FM-4A**

Same as FM-4 bolted from the rear (no adhesive)



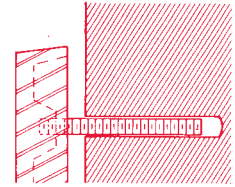
**PM-1**

Projected mount with collars and threaded studs set in adhesive



**PM-1A**

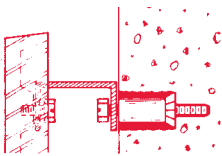
Same as PM-1 bolted from the rear (no adhesive)



**PM-1B**

Same as PM-1 without collars set in adhesive

FM-4, FM-4A, PM-1, PM-1A, PM-1B (threaded stud mounting variations) .....No charge



**PM-2**

Projected Mount with brackets (minimum projection 2")



**BM-3**

Free standing channel or bar mount



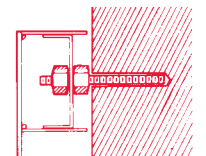
**BM-3A**

Double back bars or channels



**BM-3B**

Single back bar or channel



**FABRICATED LETTERS**

Adaptable to any stud-type mounting shown.

- PM-2** Aluminum extension brackets, 2" to 4" projection .....15.00 per letter (NET)
- BM-3** Base mount, up to 8" letter (up to 1-1/2" aluminum bar or channel) .....15.00 per letter (NET)
- Base mount, 9" to 18" letter (up to 3" aluminum channel) .....15.00 per letter (NET)
- Base mount, 19" to 24" letter (up to 4" aluminum channel) .....17.50 per letter (NET)
- BM-3A** Double back mount, up to 8" letter (3/4" square aluminum channel) .....20.00 per letter (NET)
- Double back mount, 9" to 12" letter (1-1/2" square aluminum channel) .....20.00 per letter (NET)
- BM-3B** Single back mount, up to 4" letter (1" aluminum bar) .....15.00 per letter (NET)

Bars and channels are available in either natural aluminum or stock color painted finishes.

## Desk and Door Plates



NUMBER	DESCRIPTION	BRONZE	ALUMINUM
244	10" x 3" Door Plate	145.00	108.00
245	10" x 2-1/4" Desk Plate (Easel Back)	178.00	130.00
246	Custom Etched Bronze Desk Plate	Contact Factory	
247	12" x 3" Desk Plate (Easel Back)	218.00	178.00

Add \$25.00 net for standard walnut bases. Contact factory for other sizes available.

# A.D.A. Signage Products

## Standard Sign Types

Standard signs are available in 6" width and 8" height for signs requiring only pictograms. Copy signs with only letter and braille are available in 2" width and 10" length. Our standard sign types are available in many color combinations to accent any decorating or color scheme. Custom shapes, sizes, and colors are also available on a quoted basis.

Magnesium and zinc plates can be finished in two colors to achieve an appropriate contrast. Aluminum and bronze plates are available with one color background and satin finished metal for the contrasting raised graphics, letters and braille.

## Artwork for Production

A.R.K. Ramos will set the type and braille copy for standard signs. Custom signs will need to have full size vector artwork provided by the customer. If you are not able to provide the artwork, our art department can produce the required art for most any design at a nominal charge.

## Standard Colors

Aluminum plates are available with one A.R.K. Ramos standard color background and satin aluminum copy. Additional colors will be an added charged.

Magnesium plates are available with one background color and one raised letter color combination. Contact factory for a list of colors available on magnesium signs.

**Custom Colors will be \$20.00ea. per color. (net)**



ADA-7



ADA-8



ADA-9



ADA-10

SIGN TYPE	SIZE	1/8" MAG./ZINC	ALUMINUM	BRONZE	GLASS
Pictograms Only	6" x 6"	149.00	135.35	176.25	120.00
Pictograms W/Copy	6-1/2" x 8"	149.00	135.35	176.25	120.00
Copy Signs	2" x 10"	88.20	98.50	135.45	80.00



MEN

ADA-1



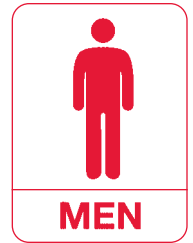
WOMEN

ADA-2



RESTROOMS

ADA-3



MEN

ADA-4



RESTROOM

ADA-5



WOMEN

ADA-6

# Ordering Information (order form on back cover.)

## Additional Costs/Ordering Information

### Artwork

In lieu of camera ready artwork you may provide an .EPS or .AI file for PC with your job. We cannot accept Macintosh disks. Contact the factory for any additional information you may need on electronic files and the requirements for production.

We can prepare artwork for logos or seals on your job if not available. You will need to contact the factory to get pricing information on this service along with time needs to complete your job.

### Terms

Terms are available to most established accounts. New account initial orders will be COD or pre-paid before shipping. Contact our credit department for more information on options available. Add 50% deposit required for all orders over \$5000.00.

### Credit Cards

We now accept most major credit cards for payment. Contact our credit department for particular requirements.

### Shipping

Unless specified we ship by the most economical means. All shipments are sent in perfect condition. Please open and inspect all packages immediately upon arrival. Any damages should be so noted when you sign the bill of lading. The delivering carrier should arrange for an inspection of any damaged product.

### Returns

Should something need to be returned, you must have our authorization. You will need to enclose a cover letter with explanation and reason for return, along with action to be taken. Address your letter to the person you spoke with authorizing the return.

### Minimum Charges & Additional Charges

#### Minimum Charges:

Standard letter order	\$35.00 (net)
Duranodic letter order	\$75.00 (net)
Clear anodized letter order	\$45.00 (net)
Cast plaques/plates	\$40.00 (net)

#### Custom Color Charge:

Custom color on plaques or letters	\$30.00 (net)
Custom colors on metal letters	\$20.00 (net)
(We will require a chip, formula or PMS number)	

#### Drilling Templates:

Templates will be charged at twenty (20) cents per vertical inch per letter. (Example...Twenty six inch letters will be charged as 20 x 6" x .20 = \$24.00)(net). **Minimum charge \$10.00 (net).**

#### Adhesive:

Silicon (one tube per 10 letters) \$4.00 per tube

#### Stainless Steel Hardware:

Add \$3.00 per letter for stainless steel studs (3")

**We Accept These Major Credit Cards – VISA, MasterCard and Discover**

**Prices and specifications are subject to change without prior notice.**

**All orders that ship C.O.D. will have an additional \$10 charge added to the final invoice. This applies to ALL orders, even if freight is included in the quotation.**

# Order Form

Printed in U.S.A.  
© Copyright A.R.K. Ramos 2014

<b>B I L L T O</b>	COMPANY NAME	<b>S H I P T O</b>	
	ADDRESS		
	CITY, STATE, ZIP ( ) / ( )		
	TELEPHONE NUMBER & FAX NUMBER		
P.O.	SHIP VIA: <input type="checkbox"/> UPS <input type="checkbox"/> AIR <input type="checkbox"/> OTHER RESIDENTIAL <input type="checkbox"/> YES <input type="checkbox"/> NO		

## LETTER SPECIFICATION

CAST  FABRICATED  PRECISION CUT  OTHER \_\_\_\_\_  
 ALUMINUM  BRONZE  BRASS  OTHER \_\_\_\_\_

LETTER STYLE	<input type="checkbox"/> UPPER CASE <input type="checkbox"/> UPPER/LOWER	HEIGHT	DEPTH
FINISH COLOR			
MOUNTING TYPE <input type="checkbox"/> FM-4 <input type="checkbox"/> FM4-A <input type="checkbox"/> PM-1 <input type="checkbox"/> PM-1A <input type="checkbox"/> BAR MOUNT <input type="checkbox"/> SPECIFY _____			
PROJECTION	TEMPLATE <input type="checkbox"/> YES <input type="checkbox"/> NO LENGTH	ADHESIVE <input type="checkbox"/> YES <input type="checkbox"/> NO	
APPROVAL DRAWINGS <input type="checkbox"/> YES <input type="checkbox"/> NO NO. OF COPIES _____	PATTERN/ARTWORK (IF NEEDED) <input type="checkbox"/> A.R.K. TO PROVIDE @ ADDNL. COST <input type="checkbox"/> CUSTOMER TO PROVIDE		

## TEXT

	QTY/SIZE	UNIT COST	TOTAL
	/		
	/		
	/		
	/		
TEMPLATE LETTER HEIGHT X NO. OF LETTERS X 20¢ = COST (NET) (Minimum \$10.00)			
MOUNTING ADHESIVE 1 TUBE WILL BE PROVIDED PER 10 LETTERS APPROX.		\$4.00 ea.	
		<b>TOTAL</b>	

## PLAQUE SPECIFICATION

**ATTACH TEXT SHEET**

CAST  ETCHED  
 ALUMINUM  BRONZE  BRASS  OTHER \_\_\_\_\_

LETTER STYLE	TEXTURE
BORDER	FINISH
SIZE	MOUNTING TYPE <input type="checkbox"/> NO. 1 <input type="checkbox"/> NO. 2 <input type="checkbox"/> NO. 3 <input type="checkbox"/> NO. 4 <input type="checkbox"/> NO. 5
APPROVAL DRAWINGS <input type="checkbox"/> YES <input type="checkbox"/> NO NO. OF COPIES _____	PATTERN/ARTWORK (IF NEEDED) <input type="checkbox"/> A.R.K. TO PROVIDE @ ADDNL. COST <input type="checkbox"/> CUSTOMER TO PROVIDE

SIGNATURE \_\_\_\_\_ DATE \_\_\_\_\_

**A.R.K. RAMOS**  
**Architectural Signage Systems**  
 Printed in U.S.A.  
 © Copyright A.R.K. Ramos 2015

1321 South Walker (73109)  
 P.O. Box 26388 (73126)  
 Oklahoma City, Oklahoma  
 405-235-5505  
 FAX 405-232-8516  
 800-725-7266 • CALL TODAY  
 www.ARKRAMOS.com