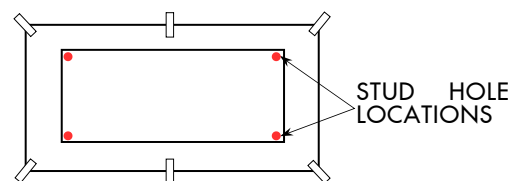


PLAQUE **INSTALLATION** INSTRUCTIONS

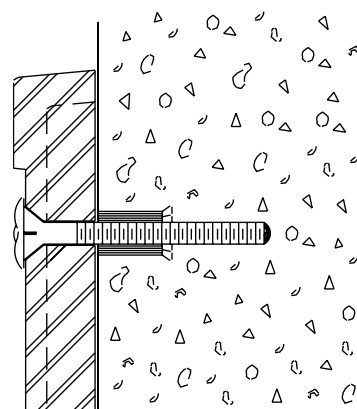
FIRST POSITION YOUR TEMPLATE ON THE SIGN WALL AND SECURE
WITH TAPE.

CHECK TO SEE THAT IT IS LEVEL HORIZONTALLY & VERTICALLY.



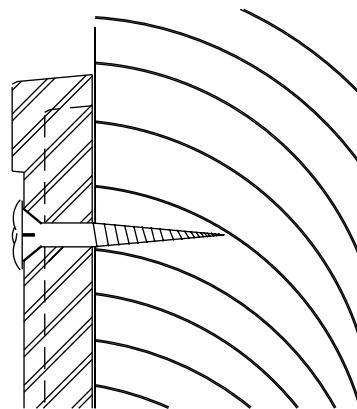
TYPICAL ROSETTE MASONRY WALL MOUNTING

1. USING A CARBIDE-TIPPED MASONRY BIT, DRILL INTO THE MOUNTING SURFACE THROUGH EACH STUD LOCATION MARK. USE THE SAME DIAMETER BIT AS YOUR STUD DIAMETER.
2. REMOVE THE TEMPLATE AND BLOW OUT THE HOLES, REMOVING ALL DEBRIS. FAILURE TO CLEAN OUT THE HOLES WILL RESULT IN POOR ADHESION.
3. TAP IN EXPANSION SHIELD.
4. INSERT SCREW THROUGH PLAQUE AND SCREW INTO EXPANSION SHIELDS.
5. ONCE PLAQUE IS SECURLY MOUNTED ON THE WALL, TAP ROSETTES LIGHTLY INTO PRE-DRILLED SCREW HEADS.



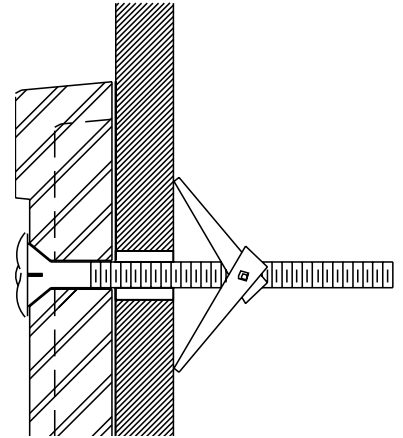
TYPICAL WOOD SCREW WALL MOUNTING

1. DRILL 1" DEEP HOLE OVER TEMPLATE LOCATION HOLES.
2. MAKE SURE THE HOLES ARE SLIGHTLY SMALLER THEN THE SIZE OF THE SCREW.
3. INSTALL SCREWS (DO NOT OVER TIGHTEN)
4. IF ADDING ROSETTES, ONCE PLAQUE IS ON WALL TAP ROSETTES LIGHTLY INTO SCREW HEADS.



TYPICAL DRYWALL MOUNTING

1. DRILL HOLE THROUGH DRYWALL (FOLLOWING TEMPLATE LOCATION HOLES]
2. REMOVE THE TEMPLATE AND SLIDE THE SCREWS THROUGH THE PLAQUE.
3. PLACE PLAQUE ON WALL AND PUSH WING NUTS THROUGH HOLES AND THROUGH WALL.
4. TIGHTEN THE SCREWS (DO NOT OVER TIGHTEN)
5. ONCE PLAQUE IS ON WALL TAP ROSETTES LIGHTLY INTO SCREW HEADS.



TYPICAL CONCEALED MASONRY WALL MOUNTING

1. USING A CARBIDE-TIPPED MASONRY BIT, DRILL INTO THE MOUNTING SURFACE THROUGH EACH STUD LOCATION MARK. USE THE SAME DIAMETER BIT AS YOUR STUD DIAMETER AND MAKE THE HOLE SLIGHTLY LONGER THAN THE LENGTH OF YOUR STUD.
2. REMOVE THE TEMPLATE AND BLOW OUT THE HOLES, REMOVING ALL DEBRIS. FAILURE TO CLEAN OUT THE HOLES WILL RESULT IN POOR ADHESION.
3. SCREW THE STUDS INTO THE BACKS OF THE PLAQUE.
4. SQUEEZE A SMALL AMOUNT OF ADHESIVE ONTO THE END OF EACH STUD, PRESS PLAQUE INTO THE WALL AND MAKE FINAL ALIGNMENT. SECURE WITH TAPE IF DESIRED WHILE YOU ALLOW THE ADHESIVE TO SET.

